



## Victorian Bellefonte



Seven United States Governors called it home and it's known as one of the most beautiful Victorian Downtowns in the country. Georgian architecture is pristinely preserved in the town's National Historic District which transports you back in time each holiday season with its Victorian Christmas Celebration.

Bellefonte is the Centre County seat and was named in 1785 after a large spring that still flows through the center of town. Stroll through Tallyrand Park, then dine in the Gamble Mill, an upscale restaurant nestled inside what was a working grist mill!

## Boalsburg

A town more than 200 years old, Colonial Boalsburg is the birthplace of Memorial Day. The tradition of decorating Veterans' graves began here in 1864. Each year Boalsburg commemorates the event with "A Day in Towne", a Memorial Day celebration which attracts more than 25,000 visitors over the three-day weekend.



Businesses on the diamond and surrounding area of the village work hard to preserve its historic charm and hospitality.

Home to the Pennsylvania Military Museum, Boal Mansion Museum/Christopher Columbus Chapel, and Duffy's Tavern, an old stagecoach stop, there are endless stories waiting to be told...

## Philipsburg

Described as "complete wilderness" by the founder, the town of Philipsburg began with the building of one road, a saw mill and a grist mill. Today it's running strong with a Mainstreet Program dedicated to revitalizing the store fronts...without



losing its historic small town charm. Philipsburg is home to the Rowland Theatre, a Historic Landmark. The theatre was built and dedicated by Charles Rowland to the community in 1917 to "anticipate the future and maintain our best past traditions" and is still showing movies today. The nearly 200 year old Union Church, with gothic style architecture, preserves the quaintness of its past...it was originally a log structure used as a "meeting house" where all congregations throughout the community could worship. Today Union Church is preserved by the Philipsburg Historic Foundation and is used for weddings and other events.

## State College

Take in a Broadway Musical, comedy, ballet and the symphony, all in one day. Hotels with history, internationally ranked art exhibits, unique shops, fine dining,

night clubs and cafés...all wrapped into one charming package in Downtown State College. Growing quickly, it has been ranked over the years as one of the safest towns to live in, fun place to play in and in 2004, to be single in! Hosting the renowned Central Pennsylvania Festival of the Arts each summer, First Night® each winter and home to the Penn State



Nittany Lions, there is always something to Tour, Roar and Explore in Downtown State College...and it's all a stone's throw from the peaceful seclusion of a wooded trail in the mountains! An experience like no other...some say once you get here, you may not want to leave!

## Sports Illustrated Pennsylvania Sports Town of the Year



The Centre Region/State College Area is the 2003 Pennsylvania Sportstown of

the Year. In celebration of **Sports Illustrated Magazine's 50th Anniversary**, the magazine named a sportstown in all 50 states. The award was given to the Centre Region to honor the many sports volunteers in the area who work together to make a difference in the lives of the youth involved in Parks and Recreation athletics.

## Aaronsburg

A town which truly is Central Pennsylvania, Aaronsburg, founded by Aaron Levy, is the bull's eye center of the commonwealth. Levy bought the land in the late 1700's-making Aaronsburg the oldest town in Centre County-he had high hopes of making it a political "hot



seat" as the County Seat. However, those dreams never came to fruition because of a lack of water supply close to the town. Aaronsburg does have quite a history though...as it became a place where many different religious denominations came together in a tradition of mutual respect. It is called the "Aaronsburg Story" and lives on today.

## A Tale of the Past...A Story into the Future

Adaptive Reuse "The art of creating a new use for a building that has outlived its purpose..."and Centre County is a box full of gems!

The most recent effort is the current "Save the State" campaign to re-open the State Theatre in Downtown State College. It has taken a town full of dedicated volunteers to begin the process of raising the funds to revitalize the almost 60 year old landmark...and raise the curtain up again as it makes its debut as a Performing Arts Center...open to actors, musicians, independent film makers and more.

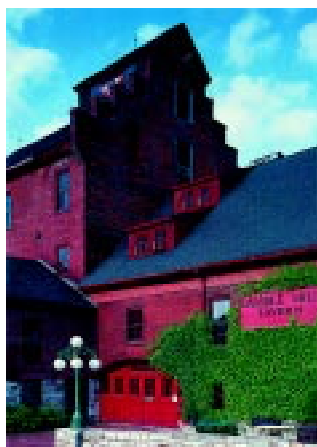
It was one of Penn State University's most ambitious fund drives ever...and it turned an old vacant department store

into one of the classiest theatres this side of Pittsburgh. The Penn State Downtown Theatre was built within the Danks building, saving it from abandonment. The building sat empty near the popular Allen



Street Corner of Beaver Avenue before Penn State University President Graham Spanier made the announcement to use the building to expand the University's School of Theatre and Pennsylvania Centre Stage.

One of the county's most innovative revitalizations is inside the 200 year old Gamble Mill Tavern. Opened in 1786 as a working grist mill, known as "Lamb's Crossing" it now hosts a fine dining experience people travel for miles to taste. In 1892 the five story mill was destroyed by fire and rebuilt to three stories. Water still flows through the raceway and under the building where at one time a waterwheel supplied power; today the turbine that replaced the waterwheel is used to pump water to various sections of town.



## Tour Too...

- Centre County Historical Library-Genalogy
- Wine Trail
- Antiquing
- Centre County/Penn State Visitors Center-Environmentally Friendly Building



Central  
Pennsylvania

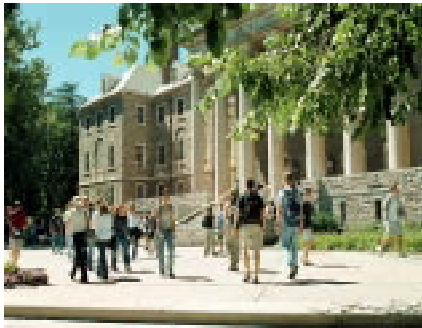
CONVENTION & VISITORS BUREAU

Tour. Roar. Explore...more!

Contact: Christie Black,  
Director of Marketing  
Toll Free: 800-358-5466  
Phone: 814-231-1401 Ext: 315  
Fax: 814-231-8123  
christieb@centralpacvb.org  
www.centralPACVB.org



## Penn State University



Celebrating 150 years...

From agricultural college to world-class learning community-the story of The Pennsylvania State University is a mission of teaching, research, and public service. The Commonwealth chartered the school at the request of the Pennsylvania State Agricultural Society in 1855. The goal was to apply scientific principles to farming, a radical departure from the traditional curriculum grounded in mathematics, rhetoric, and classical languages. In 1863 the Agricultural College of Pennsylvania became the Commonwealth's sole land-grant institution.

Penn State Kicks off its Sesquicentennial Celebration in July 2004, with an enrollment of almost 84,000 students, nearly 42,000 of them are enrolled at the University Park campus.

## Centre Furnace Mansion- The PSU Connection

The Centre Furnace Mansion serves as headquarters for the Centre County Historical Society. The Mansion, the ironmaster's residence for Centre Furnace, has been restored and is furnished to reflect the period of residency of ironmaster Moses Thompson and his family, 1842-1891.

The benefits of the ironmaking industry in Centre County go beyond its economic impact on the area. Perhaps the most important legacy for **Gen. James Irwin** (1800-1862) and **Moses Thompson** (1810-1891), who owned and managed Centre Furnace, was their donation of money and land to the Pennsylvania Agricultural Society in 1855 which led to the establishment of the Farmers's High School, now Penn State. 150 years later, Penn State students are helping to showcase this historic site.

## PSU Sports Legend, Coach Joe Paterno



1982 and 1986.

## Thon

It began as an effort to build the reputation of the Interfraternity Council (IFC) nearly 40 years ago...today it has grown into an annual February event, completely orchestrated by students in the Penn State IFC/ Panhellenic Society, -which is the largest student run philanthropy in the country- is attended by thousands and is always a media frenzy...but most importantly raises millions of dollars annually for kids with cancer. "Thon" is a 48-hour no-sitting, no-sleeping fundraising dance marathon that benefits The Four Diamonds Fund, Conquering Childhood Cancer. It is an event that truly captures the spirit of the

Penn State Student body and the children whose lives they touch.

## University Creamery

Take a dip into the Creamery! A tradition since 1896, on a football weekend, student employees can dip several thousand cones a day with flavors ranging from



Happy Happy Joy Joy, to the famous Bitter-sweet Chocolate Mint to Peachy Paterno, it is an ice cream experience like no other. Penn State University is famous for their ice cream short course...it is where Ben & Jerry of Ben & Jerry's Ice Cream got their start!

## Bryce Jordan Center

In a small town...but a big name in entertainment! The Bryce Jordan Center (BJC) has hosted top names in the music industry such as the Dave Mathews Band, Elton John & Billy Joel, Brittany Spears, Cher, and Liza Minelli to name a few. The Philadelphia 76'ers practice here, the



Barnum & Bailey's Circus always draws a crowd and the list goes on. The BJC, located on the Penn State University Park Campus, opened its doors in 1996...but has already entertained close to six million people and is an award winning venue and meeting facility.

## Theatre

Big Glitz in a small town...Penn State's Center for the Performing Arts presents nationally and internationally famous music, theatre and dance performances such as Miss Saigon, Les Miserables and Caberet ordinarily only available in metropolitan areas. Shows take center stage at Eisenhower Auditorium, Schwab Auditorium and the new Penn State Downtown Theatre.

## Nittany Lion Inn



History at its finest...the colonial style Nittany Lion Inn was built in 1931

and is owned and operated by Penn State University. The Inn's charm and elegance make it a favorite to PSU Alumni and visitors alike...it is one of the states premier leisure, meeting and conference facilities. The Nittany Lion Inn is on the National Register of Historic Hotels.

## Museums

Penn State has a vast array of cultural experiences...aside from the theatre, PSU has a wealth of museums: Palmer Museum of Art, Penn State All-Sports

Museum, Zoller Gallery, Earth & Mineral Sciences Museum, and the Hub-Robeson Galleries.

## Research

Penn State's research expenditures in fiscal 2003 climbed to \$545 million...the university credits strong collaboration by faculty members and students.

## What is a Nittany Lion?

The Nittany Lion is more than a cheering mascot on the Penn State sidelines...legend has it he's the vision of intimidation set before visiting teams. At least that's why the Nittany Lion originally became the mascot for Penn State Athletics. "Nittany" is a word derived from an American Indian term "protective barrier of the wind." The mountain lion roamed Centre County when the University was founded. The adoption of the Nittany Lion as the mascot was the idea of 1907 alumni and member of the Penn State Baseball Team, Joe Mason. Mason one-upped Princeton's Bengal Tiger with the Nittany Mountain Lion, the "fiercest beast of them all."



Contact: Christie Black,  
Director of Marketing  
Toll Free: 800-358-5466  
Phone: 814-231-1401 Ext: 315  
Fax: 814-231-8123  
christieb@centralpacvb.org  
www.centralpacvb.org

# Explore...

## **Penn's Cave and Wildlife Park**



Explore it by boat, its America's only all-water cavern. Flow along the underground stream through limestone corridors...stalagmites, stalactites, flowstone cascades and draperies decorate the interior rooms. Above ground voyage over a thousand acres of Penn's Cave forests and fields, preserved as a natural habitat for birds, plants and animals. Deer, elk, wolves, bears, bison, mustangs and longhorn cattle all roam the area.

## **Cycling**

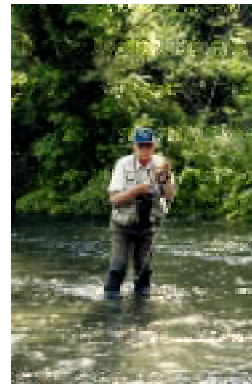
Cycle Centre County is hitting the scenic roads, miles of mountainous trails, even rolling through picturesque historic towns. Whether you're looking for the beauty of a ride on a country road or to challenge



yourself on rugged terrain, we have some of the best riding you'll find anywhere around! The Central Pennsylvania CVB has self-guided Beginner, Intermediate and Advanced route maps that will keep you going for miles and cycle friendly lodging where you can get a good night's rest to fuel up for the next day's ride!

## **Fishing**

World-renowned Fly-Fisherman Joe Humphries and President Jimmy Carter can be found fishing on Spring Creek! It is said to be the finest wild trout stream in Pennsylvania. Surveys conducted by the PA Fish & Boat Commission have



consistently shown Spring Creek to be the most densely populated wild brown trout stream in the Commonwealth. Fisherman's Paradise and Benner Spring are favored by anglers. Humphries hosts trout trips/educational excursions in our region...Women belonging to the PA Breast Cancer Coalition cast here for the health benefits.

## **Mount Nittany**

Nit-A-Nee, which means "Protective Barrier of the Wind", was an Indian maiden whose lover, Lion's Paw, was killed... Nit-A-Nee enfolded him into her arms and



carried his body back to a place in the center of the Valley where she laid him in his grave and built a mound of honor over his strength...the beginning of the legend.

It's Centre County's most prominent natural landmark and is protected from development by the Mount Nittany Conservancy. Its beautiful hiking trails lead to breathtaking views of Happy Valley.

## **Ridge Soaring Gliderport**

World famous for ridge, thermal and wave soaring with many national and world records set during the spring and fall



months, the Ridge Soaring Gliderport is recognized for its quality flight training program and

extraordinary safety record. Co-founder Tom Knauff is the author of the most popular glider flight training manuals in the USA, and the staff instructors are all extremely experienced. The Gliderport has been in operation since 1975 and most recently featured in the '90's remake of the *Thomas Crown Affair*, starring Pierce Brosnan and Rene Russo.

### **Explore Too...**

- Water-based Tourism



### **Sky's the Limit Ballooning**

Take a ride in a hot air balloon...Boasting a perfect safety record...ballooning over the mountains and valleys of central Pennsylvania is just the beginning.

- Kids' brochures-trails
- Bird Watching Trails

### **Shavers Creek Environmental Center**

Shavers Creek is part of Continuing Education at Penn State University. It is an outreach source for environmental education and team building, an outdoor laboratory for students, a raptor center, and a fun place to visit! The center's goal is to create programs that enable people to learn how to live and interact harmoniously with each other and the natural world. The Annual Maple Harvest Festival and Halloween Trails are local favorite events at the center.



**Central  
Pennsylvania**

CONVENTION & VISITORS BUREAU

**Tour. Roar. Explore...more!**

**Contact: Christie Black,  
Director of Marketing  
Toll Free: 800-358-5466  
Phone: 814-231-1401 Ext: 315  
Fax: 814-231-8123  
christieb@centralpacvb.org  
www.centralPACVB.org**

# More!



## A Day in Towne



The Birthplace of Memorial Day, Boalsburg Village, is where the tradition of decorating veterans' graves began in October, 1864. Each Memorial Day the town commemorates the event by hosting "A Day in Towne" celebration. A bronzed statue of "The Three Ladies" stands in the cemetery overlooking their loved ones final resting place, where they began the tradition of "Decorating Day". "The Three Ladies" is the only statue in PA, other than the Liberty Bell, dedicated to a national holiday.

## 4<sup>th</sup> Fest



Since 1927, there has been a July 4th celebration in Centre County...in 2004 people witnessed what the Travel Channel called "one of the best fireworks displays in the world". A celebration like this only happens with a huge commitment from the hundreds of volunteers who work to make the show a huge success each year.

## Central PA Festival of the Arts™



Founded in 1967, "Arts Fest", nestled in Downtown State College and on the Penn State Campus, features the work of approximately 1,000 visual and performing artists and a nationally-ranked sidewalk sale featuring over 350 booths. Arts Fest is held annually starting Wednesday of the first full week after the Fourth of July.

## Centre County Grange Fair & Encampment



A family tradition over 130 years in the making, the Grange Fair is the largest and touted as one of the last encampment fairs in the country. It has grown to almost 1,000 tents—sites passed down to family

members as prized possessions, generation after generation; 7,000 exhibitors and more than 1,300 RVs...the fairgrounds in Centre Hall become a town within itself for the week long August event. Campers haul in sofas, rugs, lawn decorations...you name it. Competitions are sparked to see whose tent is a true home away from home! This is a must see to believe!

## Penn State Ag Progress Days

Penn State's annual August event held in Rock Springs, is a venue for agriculturalists to show-off what's new in the world of Agriculture. There are field & herding demonstrations, farm safety demonstrations, farm tours, pesticide education programs, equine exhibits and educational programs, environmental exhibits and programs, equipment dealers and more.



## Discovery Days

A festival held each October the weekend before Columbus Day in the village of Boalsburg—celebrating the Boal Family's link with Christopher Columbus. Featuring ethnic crafts, food and live music...Saturday's events wrap-up with



the Annual Century Ball held in the Boal Mansion Museum. A Columbus Day service is held in the Columbus Chapel to celebrate his arrival in the new world in 1492. Memorabilia once belonging to Christopher Columbus is preserved in the chapel.

### Bellefonte Victorian Christmas

Take a journey back in time to Christmas



past.... where ladies in long traditional dress ride in horse drawn carriages, men

in top hats greet you in town and the sounds of holiday carolers ring in your ears. It happens each December and you may lose track of father time....

### Polar Express

#### Bellefonte Historic Railroad

Come aboard the Polar Express! A special trip in December on the Bellefonte Historic Railroad is based on Chris Van



Allsburg's popular children's book that tells of a young boy's magical train ride to the North Pole. The train, decked out for the holidays, will depart from Bellefonte for a ride to the "North Pole." During the ride, passengers will hear a dramatic reading of "The Polar Express" while munching on ornate holiday cookies!

### First Night @ State College



Founded in 1994, a community-oriented, alcohol-free New Year's Eve

celebration of the visual and performing arts. It is best known for the Commonwealth of Pennsylvania's largest ice sculptural display.

### MORE Too...

- People's Choice Festival, Boalsburg
- Bellefonte Arts & Crafts Fair
- Colonial Christmas, Boalsburg
- Heritage Days, Philipsburg
- PSU's "The Great Insect Fair"
- Nittany Antique Farm Machinery Show, Penn's Cave
- Cool Cruise, Bellefonte
- Maple Harvest Fest, Shavers Creek
- Haines Township Fall Festival
- Bellefonte Lamplighter Tour



Central  
Pennsylvania

CONVENTION & VISITORS BUREAU

Tour. Roar. Explore...more!

Contact: Christie Black,

Director of Marketing

Toll Free: 800-358-5466

Phone: 814-231-1401 Ext: 315

Fax: 814-231-8123

christieb@centralpacvb.org

www.centralpacvb.org